

SCWO

Singapore Council of Women's Organisations

ANNUAL
REPORT
FY 2025/26

CONTENTS

About Us	3
President’s Message	4
Member Organisations	5
OUR IMPACT	
Achievements at a Glance	7
Financial Summary	8
Fundraising	
○ 45 Years of Powering Change	9
○ In Her Stride	10
Summit for Action on Gender Equality (SAGE) 2025	11
Research & Advocacy	13
International Relations	14
Media Coverage	15
Maintenance Support Central	16
Star Shelter	17
SHECARES@SCWO	18
BoardAgender	19
Singapore Women’s Hall of Fame	20
Project Awesome	21
New2U by SCWO	24
Volunteer Engagement	25
Disclosure Report	26
The Year Ahead	30
Executive Board	31
Sub Committees	32
Organisational Chart	34
Donor Acknowledgements	35



OUR VISION

Singapore's leading organisation
driving equal space, voice and
worth for women.



OUR MISSION

SCWO promotes gender equality by serving
women and its member organisations through
advocacy, collaboration and provision of
critical services for women in need.

45 YEARS
OF POWERING CHANGE

PRESIDENT'S MESSAGE

“ **Empowering women. Strengthening families.
Building a more equitable society.** ”

Meaningful progress is never achieved by one person or organisation alone. It is built through the collective efforts of individuals united by a shared purpose.

As we celebrate 45 years of powering change, I am reminded of the countless women leaders, advocates, volunteers, member organisations, partners, and staff who have shaped SCWO's journey. Their dedication has enabled us to champion women's interests, support families, and create opportunities for women to thrive.

For more than four decades, SCWO has remained steadfast in advancing equal space, voice, and worth for women in Singapore. While we celebrate how far we have come, this milestone also invites us to look ahead — to ensure that SCWO continues to evolve, remain relevant, and create meaningful impact for generations to come.

Dr Seow Yian San
SCWO President 2024-2026

45 Years of Powering Change

Our 45th anniversary was more than a celebration of our achievements; it was a reaffirmation of SCWO's commitment to building a Singapore where women are safe, heard, and valued equally.

Throughout the year, we continued to champion women's leadership while supporting women and families facing challenging circumstances. Through Star Shelter, SCWO provided safety, support, and hope to women and children affected by family violence.

This milestone also reinforced our responsibility to build on SCWO's legacy — strengthening the organisation to remain a trusted advocate for women and a force for positive change for generations to come.

Changing Mindsets Through Conversation and Collaboration

Creating lasting change requires more than policies and programmes — it requires a shift in mindsets.

This belief was at the heart of the Summit for Action on Gender Equality (SAGE) 2025, which brought together leaders, practitioners, policymakers, and advocates to explore the attitudes and societal norms that continue to shape women's experiences.

Centred on the theme of Changing Mindsets, SAGE fostered meaningful conversations that challenged assumptions, encouraged new perspectives, and inspired collective action. Through these discussions, we reaffirmed that achieving gender equality requires not only systemic change but also a shared commitment to changing how we think, act, and support one another.

As part of this commitment, SCWO initiated our first surveyed research initiative examining attitudes and perceptions of mental health amongst middle-aged women in Singapore.

This work underscores the importance of continued advocacy, research, and dialogue to better understand women's evolving needs and ensure that emerging issues receive the attention and support they deserve.

Throughout the year, we also strengthened partnerships across our member organisations and stakeholders. The diversity of expertise, experiences, and perspectives within our network remains one of SCWO's greatest strengths, enabling us to amplify women's voices and drive meaningful change together.

A Renewed Direction for the Future

As SCWO marked this milestone, we entered a new chapter with a refreshed vision and mission, reaffirming our commitment to advancing equal space, voice and worth for women in Singapore.

Shaped through conversations with member organisations, stakeholders, Board members and staff, we strengthened SCWO's role as a platform for collaboration, advocacy and collective action across the women's sector. Through strategic planning, stronger governance and collaborative leadership, we are building a more resilient and future-ready organisation to meet the evolving needs of women and families.

As we look ahead, we remain committed to creating opportunities for women to lead, contribute and thrive. Together, we will ensure that SCWO continues to be a powerful force for positive change for generations to come.

None of this would have been possible without the unwavering support of our member organisations, partners, Board members, staff and volunteers. Thank you for your trust, dedication and belief in SCWO's mission.



MEMBER ORGANISATIONS

Strengthening our network. Advancing collective impact.

In 2025, SCWO placed a strong focus on deepening member engagement and strengthening its role as a key convenor within Singapore’s women’s sector. Recognising that a vibrant and responsive membership network is central to our collective impact, SCWO undertook a series of focus group discussions with member organisations, alongside consultations with the Board and staff, to better understand evolving priorities, emerging challenges, and opportunities for greater collaboration.

SCWO’s strength lies in the collective voice of our members.



Deepening Member Engagement

The conversations created valuable opportunities to strengthen connections across SCWO’s membership network, foster greater alignment on shared priorities and encourage more meaningful collaboration in advancing women’s development and empowerment in Singapore.



Shaping Strategic Direction

The insights gathered helped shape SCWO’s strategic direction and reinforced the importance of building a connected community where diverse voices, expertise, and experiences can come together to advance shared goals for women in Singapore.



Representing Member Voices

This included the Pre-Budget Dialogue with Minister Indranee Rajah, Second Minister for Finance, as well as participation in an NGO Engagement Session co-organised by the Ministry of Social and Family Development, on women’s development priorities, where members were able to share ground perspectives and sector insights directly with policymakers.



Building Collective Impact

Through these efforts, SCWO continued to strengthen its role as a bridge between member organisations, stakeholders, and decision-makers, ensuring that the voices and experiences of women’s organisations remain represented in conversations that shape Singapore’s future.



Member Organisations’ Presidents and Representatives at the 45th AGM 2025



Presidents’ Forum & Pre-Budget Dialogue



23rd Executive Board with Senior Parliament Secretary (SPS), Mr Eric Chua and SCWO Patron, Ms Jane Ittogi

OUR MEMBER COMMUNITY

SCWO is proud to convene a diverse network of organisations whose collective contributions strengthen advocacy, leadership and support for women in Singapore.



ORDINARY MEMBERS

<p>Aidha</p> <p>American Women's Association of Singapore</p> <p>Association of Women Doctors (Singapore)</p> <p>Association of Women for Action & Research</p> <p>Babes Pregnancy Crisis Support Ltd</p> <p>Baha'i Office for the Advancement of Women</p> <p>Breastfeeding Mothers' Support Group (Singapore)</p> <p>British Association of Singapore</p> <p>Business and Professional Women's Association (Spore) - Third Chapter</p> <p>Chinese Women's Association</p> <p>Connected Women</p> <p>Daughters of Tomorrow</p> <p>Financial Women's Association (Singapore)</p> <p>General Conference Women's Society of Christian Service</p> <p>Graduate Women's Association of Singapore</p> <p>I Love Children</p> <p>Indian Women's Association</p> <p>Inner Wheel Club of Singapore</p> <p>Inner Wheel Club of Singapore - Central</p> <p>Inner Wheel Club of Singapore - East</p>	<p>Inner Wheel Club of Singapore - West</p> <p>Inspiring Girls SG Ltd.</p> <p>International Women's Federation of Commerce and Industry</p> <p>International Women's Forum (Singapore)</p> <p>Italian Women's Group</p> <p>Korean Women's Association in Singapore</p> <p>Lean In Singapore</p> <p>Mums@Work</p> <p>Netball Singapore</p> <p>NTUC Women & Family</p> <p>PA WIN Council</p> <p>PrimeTime Business & Professional Women's Association</p> <p>SG Her Empowerment</p> <p>Singapore Association of Administrative Professionals</p> <p>Singapore Association of Social Workers</p> <p>Singapore Association of Women Lawyers</p> <p>Singapore Business & Professional Women's Association - Main Chapter</p> <p>Singapore Business & Professional Women's Association - Mandarin Chapter</p>	<p>Singapore Muslim Women's Association (Persatuan Pemudi Islam Singapura)</p> <p>Singapore Nurses Association</p> <p>Singapore Women's Association</p> <p>Society Against Family Violence</p> <p>Society for Wings</p> <p>Soroptimist International of Singapore</p> <p>Soroptimist International of Singapore (Garden City)</p> <p>Soroptimist International of Singapore Orchid</p> <p>Spanish Speaking Women's Association</p> <p>The Kamala Club</p> <p>United Women Singapore Limited</p> <p>Wicare Support Group</p> <p>Women in Sustainability and Environment</p> <p>Women's International Shipping and Trading Association (Singapore)</p> <p>Young Women's Christian Association of Singapore</p> <p>Young Women's Leadership Connection</p> <p>Zonta Club of Singapore</p>
---	---	--



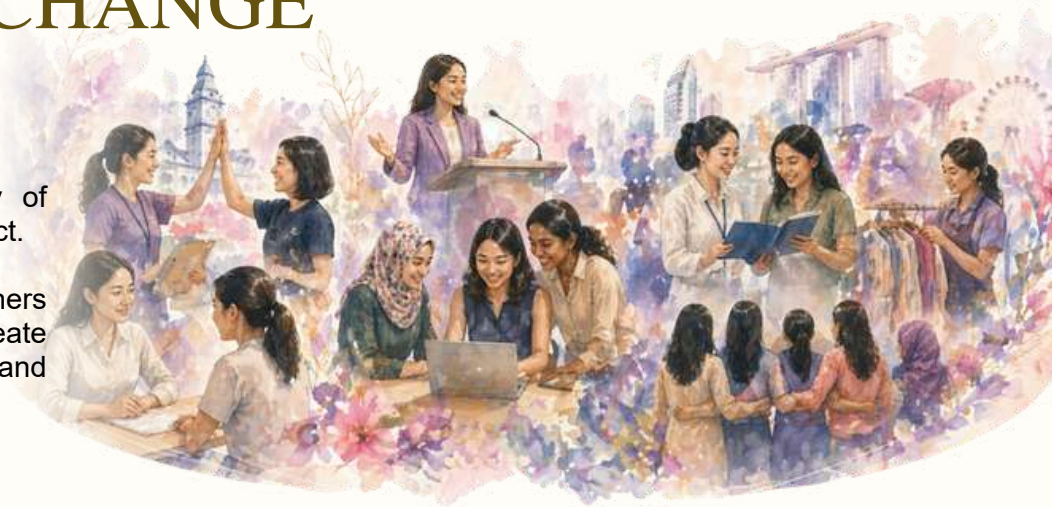
ASSOCIATE MEMBERS

<p>Bloomberg Women's Community - Singapore Chapter</p> <p>Breast Cancer Foundation</p> <p>Federation of Business & Professional Women's Association (Singapore)</p> <p>Fortune Times Women Empowerment Network</p> <p>Gentle Warriors' Trust</p>	<p>HP Singapore Women's Business Resource Group</p> <p>Image Mission Ltd</p> <p>P&G APAC #WeSeeEqual</p> <p>Shell Singapore Network of Women</p> <p>Singapore Khalsa Association Ladies Wing</p> <p>Singapore Women's Entrepreneurs Network</p>
--	---

POWERING CHANGE IN NUMBERS

Behind every number is a story of empowerment, resilience and impact.

Together with our members, partners and supporters, we continue to create meaningful change for women and families in Singapore.



\$841,826

Raised through fundraising and New2U by SCWO

helping sustain programmes that uplift women and families



1,011

Clients supported through SCWO Services

providing safety, guidance and pathways towards stability



1,669

Volunteers mobilised

supporting SCWO's programmes and services for women



714

Participants engaged through dialogues

driving action for gender equality



152

Workshops and engagements conducted

building knowledge, confidence and community connection

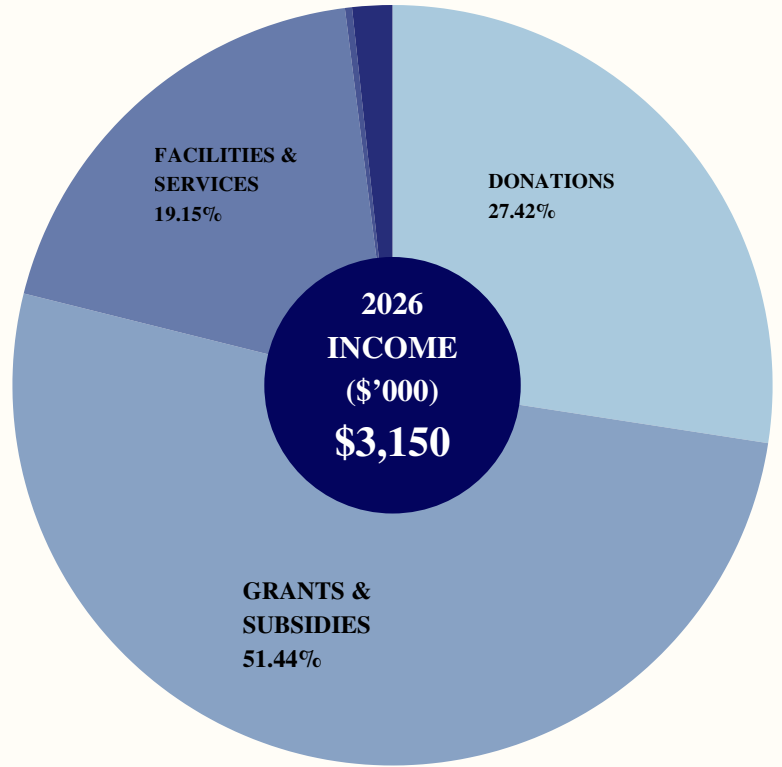
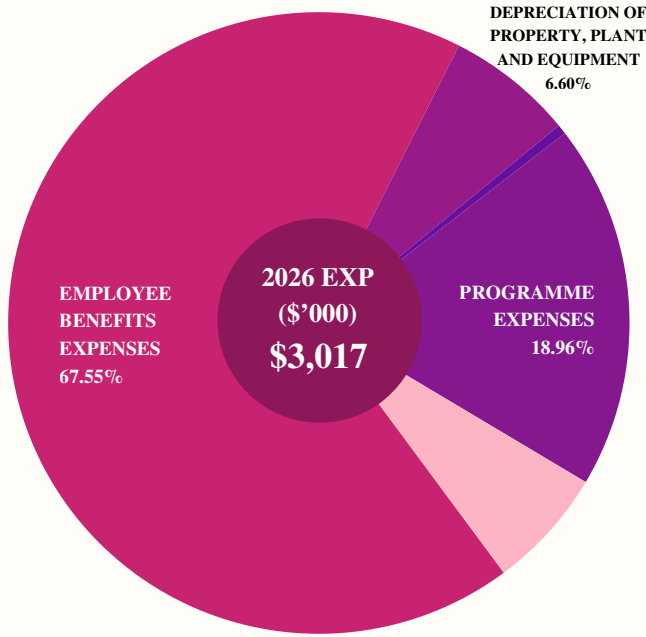


754

Donors, sponsors and partners engaged

sharing commitment to create lasting social impact

FINANCIAL SUMMARY



EXPENDITURE

- 0.03% Finance Cost
- 0.53% Depreciation of right-of-use assets
- 6.33% Others
- 6.60% Depreciation of property, plant and equipment
- 18.96% Programme Expenses
- 67.55% Employee Benefits Expenses

INCOME

- 0.01% Interest Income
- 0.31% Subscription
- 1.67% Sundry
- 19.15% Facilities & Services
- 27.42% Donations
- 51.44% Grants & Subsidies

STATEMENT OF FINANCIAL POSITION	2026 (\$'000)	2025 (\$'000)
Non-Current Assets	323	537
Current Assets	4,204	4,235
Total Assets	4,527	4,772
Non-Current Liabilities	6	16
Current Liabilities	961	1,329
Total Liabilities	968	1,346
NET TOTAL ASSETS	3,559	3,426
ACCUMULATED FUNDS	3,559	3,426

The full set of audited financial statements is available at www.scwo.org.sg



45 YEARS OF POWERING CHANGE

SCWO's 45th Anniversary Gala Dinner

The SCWO 45th Anniversary Gala Dinner marked a proud milestone where we celebrated 45 years of championing women and gender equality in Singapore. The evening brought together partners, supporters, and community leaders in honour of SCWO's legacy and continued mission to create meaningful change.



\$463,157 Raised

The Gala Dinner served as a key fundraising platform in support of SCWO's core programmes and critical services, including Star Shelter and Maintenance Support Central.



Supporting Women and Families

These programmes provide critical support to women and children facing domestic violence and financial insecurity, offering immediate assistance, practical guidance, and pathways towards longer-term stability and self-sufficiency.

Beyond direct services, the funds will also strengthen SCWO's advocacy efforts, expand outreach, and enable greater collaboration across our network of member organisations.



Francois Saurel, Regional Managing Director of APAC Edrington presenting a generous donation to SCWO President, Dr Seow Yian San



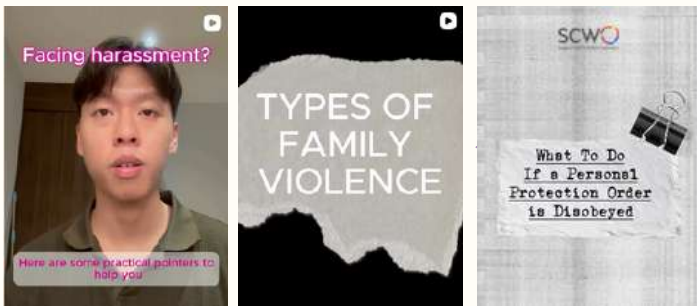
“While we celebrate our progress, the work is far from done. The journey towards true gender equality is ongoing, and your support makes all the difference.”
 -Dr Seow Yian San

SAFETY PLAN

IN HER STRIDE: FOR THE ELIMINATION OF VIOLENCE AGAINST WOMEN AND GIRLS

In Her Stride is SCWO’s annual fundraising campaign that rallies the community to stand with women and children affected by domestic violence, raising funds to support SCWO’s work in empowering survivors and strengthening support systems for those in need.

Because no one should walk through violence alone.



Digital campaign to raise awareness and education on the elimination of violence against women and girls



Raising Awareness, Inspiring Action

SCWO engaged the public through community partnerships, outreach, and online advocacy initiatives that raised awareness of domestic violence and encouraged collective action in support of survivors. In collaboration with students from the SMU Pro Bono Centre, SCWO also developed informative reels that shared practical guidance on what to do when faced with violence and where to seek support.



Amplifying Voices and Expanding Impact

As part of the campaign, SCWO also launched educational social media resources and participated in a podcast conversation with Dew Francis on Backstage Bunch, helping to broaden public understanding of domestic violence and the importance of survivor-centred support.



\$66,107 Raised

The campaign raised crucial funds contributing towards SCWO’s programmes, services, and initiatives that provide safety, support, and pathways to stability for women and families facing difficult circumstances.



SUMMIT FOR ACTION ON GENDER EQUALITY

The second edition of SCWO’s Summit for Action on Gender Equality (SAGE) was anchored by the theme **“Changing Mindsets in a Changing World.”**



25 SPONSORS AND PARTNERS



21 SPEAKERS



324 ATTENDEES



SCWO President, Dr Seow Yian San, giving the welcome address



Expert Member UN CEDAW Committee, Ms Bandana Rana giving the keynote address



Man Enough to Change: Reframing Masculinity in the Age of Influence



Not Done Yet: Thriving in the middle-age Years



Women in the Loop: The Role of AI in Gender Equality



Convening Leaders for Dialogue

Held at a time of rapid social, economic, and technological transformation, the summit brought together 324 corporate leaders, policymakers, changemakers, and civil society partners to explore practical, solutions-driven approaches to advancing gender equality in Singapore.



Driving Dialogue into Action

Through keynote presentations and panel discussions, speakers examined pressing issues shaping women’s development today, including evolving workplace dynamics, caregiving responsibilities, and broader societal shifts impacting women’s participation and leadership.

The summit created space for meaningful dialogue and the exchange of perspectives, encouraging participants to move beyond conversation towards collective action.



Breakout Session: Holistic Intervention for Families Facing Domestic Violence



Breakout Session: Understanding Mental Health Realities of Middle-Aged women



Breakout Session: 404: Help Not Found? Understanding Online Harms Through Research and Experiential Workshop



From Dialogue to Practical Solutions

Participants moved into focused breakout rooms designed to deepen discussion and translate ideas into practical action. These smaller-group sessions created space for honest dialogue, cross-sector exchange, and collaborative problem-solving on key issues affecting gender equality. Bringing together voices from diverse industries and backgrounds, the breakout rooms enabled participants to share lived experiences, challenge assumptions, and identify meaningful strategies that can drive progress beyond the summit.

More than a convening, SAGE continues to serve as a collaborative platform that connects ideas with action, advancing shared responsibility and meaningful progress towards gender equality in a changing world.

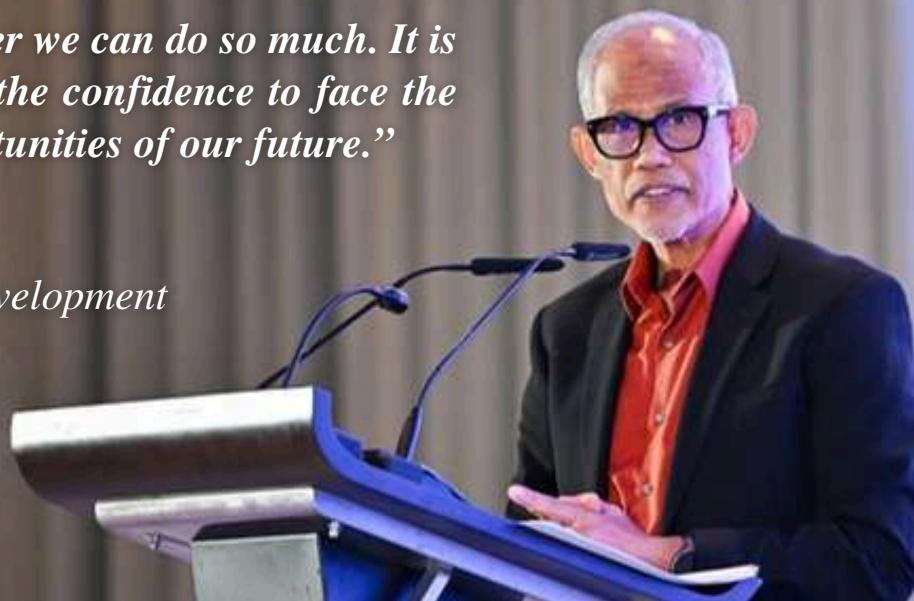
“We have to confront our own innate biases individually, but overcoming them must be a collaborative effort.”

*-Mr Ho Kwon Ping,
Founder and Executive Chairman
Banyan Group*



“Alone we can do so little; together we can do so much. It is in coming together that we have the confidence to face the challenges and harness the opportunities of our future.”

*-Mr Masagos Zulkifli,
Minister for Social and Family Development*





RESEARCH & ADVOCACY

SCWO convened discussions on key issues affecting women in Singapore, including mental health among mid-life women, the importance of women’s voices in policymaking, and the role of male allyship in advancing gender equality.



Advancing Women’s Voices in National Policy Dialogues

SCWO also co-organised its annual engagement with the Ministry of Social and Family Development (MSF) on women’s development issues linked to the Government’s White Paper on Singapore Women’s Development and the CEDAW State Report. Members participated in discussions on family and community life, workplace issues, protection against violence and harm, and support for vulnerable groups of women.



Population Association of Singapore Annual Meeting 2025: Demography and Inequality: Intersecting Paths



YWLC’s International Women’s Day 2025 Celebrations: “Take the Leap”



Strengthening Research on Middle-Aged Women’s Mental Health

The Research Committee conducted a mental health survey, Understanding Attitudes and Perceptions of Mental Health amongst Middle-Aged Women in Singapore, in partnership with James Cook University Singapore. Preliminary findings from 300 respondents, presented at SAGE 2025, showed that close to half had experienced mental health concerns, yet only 59% had sought professional help. A full report will be released in 2026.



Get-together with SAWA Leaders at the SCWO Centre



Championing Inclusion for Women in Ageing

SCWO also assumed the secretariat role for the Singapore Alliance for Women in Ageing, advocating for stronger representation of senior women in policymaking. SAWA launched the Purpose Never Pauses social media campaign to celebrate trailblazing women and challenge ageist stereotypes.



INTERNATIONAL RELATIONS



Advancing Advocacy, Shaping Policy

As an organisation with ECOSOC Consultative Status, SCWO submitted an individual written report to the United Nations for the 4th Universal Periodic Review in October 2025, highlighting issues such as violence against women, workplace discrimination and harassment, ageing, and women’s representation on boards.

SCWO also participated in the 69th Session of the Commission on the Status of Women (CSW69) in New York, which reviewed progress on the Beijing Declaration and Platform for Action and discussed ongoing challenges in advancing gender equality and women’s empowerment.



Deepening Regional Ties, Strengthening Collaboration

SCWO continued strengthening regional ties through the ASEAN Confederation of Women’s Organisations (ACWO), attending the ACWO Board of Directors Meeting held in Malaysia under the ACWO Presidency of Vietnam.

During the year, SCWO also hosted **29 international visitors**, including Baroness Helena Morrissey DBE, Ms Pen Vimoul, spouse of the Cambodian Deputy Prime Minister, and representatives from the Gender Equality in Employment Division of the Gyeonggi Provincial Government, South Korea.



SCWO President, Dr Seow Yian San with the Singapore Delegation at the United Nations Commission on the Status of Women in New York



WE2025: Future In Motion Conference and ACWO Board of Directors Meeting in Kuala Lumpur, Malaysia



Visit by researchers from Japan



Visit by the Future Leader of ASEAN Programme (Timor-Leste)



Visit by the South Korean Gender Equality in Employment Division, Women and Family Bureau, Gyeonggi Provincial Government



Visit by Baroness Helena Morrissey DBE

81 MEDIA FEATURES

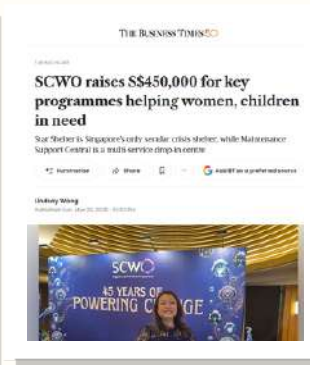
Across articles, interviews, podcasts and commentaries

SCWO strengthened its role as a leading voice for gender equality. Through 81 media features, we highlighted pressing issues, elevated women's perspectives and championed a more equitable society.



HIGHLIGHTING OUR VOICE ACROSS PLATFORMS

NATIONAL NEWS




ISSUES SPOTLIGHTED



Domestic Violence
Raising awareness and supporting survivor-centred responses

LIFESTYLE & WOMEN'S MEDIA




Workplace Fairness
Championing equal opportunities and inclusive workplaces

BROADCAST & PODCAST




Mental Health
Championing equal opportunities and inclusive workplaces



Women's Leadership
Empowering women to lead and inspire

MAINTENANCE SUPPORT CENTRAL

Maintenance Support Central (MSC) has been empowering individuals facing financial abuse since its establishment in 2011, following amendments to the Women’s Charter. MSC provides vital assistance to those experiencing distress due to delayed maintenance payments or lack of financial support from a spouse or former partner.



Making an Impact

During the year, MSC continued to support individuals in navigating financial and legal challenges.



265
clients assisted with maintenance filing



148
clients assisted through legal clinics



64
clients assisted through counselling



11
talks and public engagements



Single Mothers Programme

Creating a supportive space for mothers to heal, connect and grow.

Through facilitated sessions, participants explored themes such as navigating loss, self-nurturing, and seeking support, while finding strength, connection, and encouragement through shared experiences and a supportive community.

KNOWLEDGE AND COMMUNITY

MSC continues to raise awareness of maintenance rights and build community connections through talks, recreation and celebratory milestones.



MSC Talks

Educating the public on civil and ancillary matters



Single Mothers go on a Heritage Walk

Building connections and a sense of belonging



Single Mothers Support group Batch 3 Graduates

Celebrating growth, resilience and new beginnings



Community Engagement

Outreach efforts for advocacy and awareness

STAR SHELTER

Star Shelter serves as a critical lifeline for women and families affected by domestic violence, providing safe accommodation alongside holistic, trauma-informed care.

Support was centred on crisis response, emotional recovery, safety planning, and pathways towards long-term independence.



OUR IMPACT



28 Adults supported by the shelter



20 Children supported by the shelter



48 Residents supported in total



250 Hours of counselling and case management delivered



114 Volunteers who supported shelter programmes



36 Programmes recreational, educational and therapeutic conducted



“I feel that having a community of women who have gone through similar experiences and truly understand me made me feel less alone. For a while, I felt human and “normal” again. They understand me, even without words.”

-Past Star Shelter Resident

Healing Through Community

With the support of our volunteers, partners and sponsors, residents participated in a range of recreational and therapeutic programmes designed to promote healing, personal development and community connection.

STRENGTHENING INTEGRATED SUPPORT

A key milestone was the pilot of The GROW (Growing Relationships is Our Work) Project, a collaborative initiative between Star Shelter, Lutheran Community Care Services (LCCS), and Fellowship of Men Singapore (FMS). As a community-driven response to domestic violence, GROW adopts a holistic, whole-of-family approach to supporting families affected by harm.

This pilot marks an important step towards more integrated, cross-sector approaches to domestic violence intervention, with a focus on both survivor safety and meaningful behavioural change.

SHECARES@SCWO

SHECARES, originally launched as SHECARES@SCWO in January 2023 by SG Her Empowerment (SHE) in partnership with the Singapore Council of Women's Organisations (SCWO), is Singapore's pioneering one-stop support centre for victims and survivors of online harms.

These include cyberbullying, harassment, doxxing, stalking, defamation, image-based sexual abuse, and sextortion.



MAKING AN IMPACT



499

clients supported as of Dec 2025



over

5,000

hours delivered across counselling, legal assistance and case management



over

4,000

individuals reached through training and outreach across schools, agencies and community groups



SHECARES provides comprehensive, trauma-informed services including a helpline, textline, counselling, and pro bono legal clinics. Partnerships with the Singapore Police Force enable on-site interviews for serious cases, while collaborations with Pro Bono SG and major platforms such as LinkedIn, Snap, Meta, TikTok, Google/YouTube, and X allow for priority flagging and expedited content removal.

Building Awareness and Safer Digital Spaces

Through training and outreach initiatives, SHECARES continues to raise awareness of online harms and strengthen support systems for survivors. These efforts contribute to normalising help-seeking behaviour, reducing stigma, and advancing safer digital environments for all.

As of January 2026, SHECARES transitioned to full operations under SG Her Empowerment (SHE) at its new location at 44 Jalan Merah Saga, #01-54, Chip Bee Gardens, building on the strong foundation established through its partnership with SCWO.

BOARDAGENDER

ADVANCING WOMEN INTO BOARD LEADERSHIP

Building confidence, capability and connection for women leaders and creating a stronger, more inclusive future for leadership.



Proven Impact

42

mentees across four cohorts serving on **89 boards and committees.**

Developing Board Readiness

Through mentoring and capacity-building efforts, BoardAgender prepares women for leadership by strengthening their knowledge, confidence and strategic perspective.

FOCUS AREAS

BoardAgender plays a key role in advancing gender-balanced leadership in Singapore by connecting women to opportunities, networks and knowledge that open doors to boardroom and influence.



Governance & Legal Responsibilities



Finance, Risk & ESG Readiness



Executive Search Insights



Mentorship & Peer learning



Boardroom Confidence & Networks

2025 HIGHLIGHTS



Mentoring Programme Graduation Ceremony

Celebrating the achievements and growth of our BoardAgender mentees.



Sessions with Executive Search Firms

Insights on navigating executive search and positioning for board opportunities.



CNPL Workshop on Directorship

Understanding the evolving landscape of non-profit boards and good governance.

SINGAPORE WOMEN'S HALL OF FAME

CELEBRATING WOMEN WHOSE CONTRIBUTIONS SHAPED OUR NATION

Honouring and preserving the legacies of exceptional women, celebrating their contributions across diverse fields while inspiring future generations.



2025 Induction Ceremony

Six Outstanding Women Honoured

The 11th SWHF Induction Ceremony, held in March 2025, recognised six outstanding women whose achievements have shaped Singapore's development.



Constance Sheares

Pioneering art curator and champion of local artists



Ivy Ng

Outstanding clinician, researcher, educator and healthcare leader



June Rusdon

Outstanding entrepreneur and early childhood educator



Kamaladevi Aravindan

Award-winning bilingual writer and playwright



Liu Bin

Outstanding scientist, engineer, innovator and academic leader



Vivien Goh

Outstanding musician and nurturer of young musical talent

Collaborations



SUPPORTING SHARED ADVOCACY

SCWO supported AWARE's fundraising efforts at the AWARE Ball 2025 through the auction of autographed copies of *Awesome Women of Singapore (2021)*, which contributed to funds raised during the event.



NEW AUDIENCES REACHED

Through a collaboration with Chinese-language media platform Fortune Times to publish *She-Power Singapore*, the stories of SWHF honourees were brought to new audiences. As part of the fundraising collaboration, 15% of book sale proceeds are contributed to SCWO.

2025 HIGHLIGHTS



11th Singapore Women's Hall of Fame Induction Ceremony



Book Signing of the *Awesome Women in Singapore* books



The Launch of *She-Power Singapore*, with Fortune Times

PROJECT AWESOME

INSPIRING YOUNG MINDS,
EMPOWERING FUTURE
CHANGEMAKERS

An outreach programme of the Singapore Women's Hall of Fame that brings stories of remarkable women to life and encourages youths to dream big and challenge stereotypes.



MAKING AN IMPACT



562 YOUNG MINDS INSPIRED

through interactive and educational programmes that build confidence and challenge stereotypes.



108 STUDENTS ENGAGED

through the Virtue Voyagers programme across five primary schools.



45,000+ VISITORS REACHED

through roving exhibitions and storytelling sessions at libraries and community spaces

2025 HIGHLIGHTS

School & Community Programmes

Value-based learning through the Virtue Voyagers introduced role models such as Marjorie Doggett, Sophia Pang, and Margaret Leng Tan within the Early Childhood Holistic Outcomes (EHCO) framework.

Partnerships That Extend Impact

Initiatives with St. Joseph's Institution International (SJII), including a two-week exhibition during their International Connect Women Conference, participation in their Service Fair, and storytelling sessions integrated into their curriculum. The CHIJ Secondary Work Exposure Programme further provided students with hands-on experience in non-profit work, fostering leadership and community awareness.

Storytelling that Connects

Interactive storytelling sessions at the Children's Museum Singapore and public libraries introduced young audiences to role models such as Ivy Singh-Lim and Anastasia Tjendri-Liew in engaging and relatable ways.



Showcasing youth co-creations of card games, podcasts and interactive quizzes



Project Awesome x Boon Lay Community Club's International Women's Day



Storytelling at St. Joseph's Institution International School

AWESOME ART COMPETITION WINNERS

The AWESOME Art Competition continued to provide a creative platform for young people to engage with the stories of Singapore Women’s Hall of Fame honourees. In the 2025 edition, students explored themes of progress, legacy, and the future impact of women who have shaped Singapore. The competition received 276 entries across four age categories (ages 7–16), with 12 winners recognised.



First Place (Cat A)
Yang Yiting, 9



First Place (Cat B)
Oh Yun Dong Emelia, 10



First Place (Cat C)
Wong Shi Rui, 15



First Place (Cat D)
Nicole Victoria Iteh, 15



Second Place (Cat A)
Tan Zi Han, 9



Second Place (Cat B)
Hu Kai'En Jamie, 11



Second Place (Cat C)
Joey Chua, 16



Second Place (Cat D)
Neh'la Amrozia
Mohamed Basir, 16



Third Place (Cat A)
Thalia Foo En Ya, 9



Third Place (Cat B)
Chen Rui'en, 11



Third Place (Cat C)
Joy Tang Yue Ying, 14



Third Place (Cat D)
Wee Gim Shuen, 14

HONORARY MENTIONS

The AWESOME Art Competition also recognised 12 Honourable Mention recipients whose submissions stood out for their creativity, originality, and thoughtful interpretation of the competition theme. Their artworks reflected the imagination and potential of young people inspired by the stories and legacies of women who have shaped Singapore.



Calista Chiang, 8



Jacob Ng, 8



Mikaela Cheung, 7



Eunice Huang Jialin, 10



Katie Ong Yifei, 10



Feng Lingxi, 11



Qiao Manni, 13



Chen Sixing, 15



Vera Kua Li Xuan, 13



Erica Lim Jia Xuan, 14



Putri Adrieanna Amani Binte Abdullah, 14



Zhang Tonghe, 13

NEW2U BY SCWO

SUSTAINABLE SHOPPING, MEANINGFUL IMPACT

Promoting conscious consumerism, with proceeds supporting SCWO's programmes for women and families.



Strong Community Engagement

Key events attracted high visitor turnout and reflected growing interest in purpose-driven thrift shopping.



Wider Reach, Greater Impact

Collaborations with corporate and community partners brought curated pre-loved items to new spaces and more people.



Sustainable Choices

Making quality, affordable pre-loved items accessible while encouraging more conscious consumer habits.



Shopper at the New2U by SCWO's Mid-Year Bazaar



New2U raised a total of

\$312,562

in support of SCWO's programmes and services

COMMUNITY BAZAARS & POP-UPS



VOLUNTEER ENGAGEMENT

POWERING CHANGE THROUGH VOLUNTEERING

Mobilising volunteers to strengthen programmes, expand community reach, and support women and families in need.



MAKING AN IMPACT

Volunteers contribute their time and skills across key initiatives, supporting both frontline services and operational needs through structured engagement.



31

Corporate Partnerships



75

CSR Activities



702

Corporate Volunteers



Volunteer for the New2U by SCWO's Year-End Bazaar



Volunteers for New2U by SCWO's Mid Year Bazaar

Strengthening Communities Through Service

Throughout the year, volunteers contributed to programmes such as HerWarehouse, New2U, and community-based initiatives, assisting with day-to-day operations and enabling wider programme reach. Volunteer-led efforts also supported caregiving through babysitting services, provided social connection through the Conversation Companions programme, and extended professional support through the Legal Clinic, where volunteer lawyers offered pro bono legal advice.

Through these efforts, SCWO continues to build a strong and committed volunteer network, enabling more resources to be directed towards programmes that empower women and families in the community.



A total of
880

Volunteers



Across
16,757

Hours

Their contributions strengthened programme delivery, expanded community reach, and enabled more resources to be directed towards programmes that empower women and families.



DISCLOSURE REPORT

Purpose / Objectives

SCWO was set up in March 1980 and is the national coordinating body of women’s organisations in Singapore. It seeks to unite the various women’s organisations, clubs, committees, groups and women leaders together, working in accordance with its various aims and objectives. SCWO also serves to coordinate these associations into a national movement and to act on their behalf in matters for which it is authorised by its members. It seeks to promote the ideals of “Equal Space, Equal Voice and Equal Worth” for women in Singapore. SCWO also provides direct and support services that address the needs of women in Singapore, with special focus on the needs of vulnerable women.

Overview

SCWO is registered as a society. It is also a registered charity with effect from 15 March 2021 and has been accorded IPC status since 3 May 2021. SCWO’s IPC status has been renewed from 3 May 2025 to 2 April 2027. SCWO has its constitution as governing instrument.

UEN: S80SS0026C

IPC No: S80SS0026C

Registered Address: 96 Waterloo Street, SCWO Centre, Singapore 187967

Banker: DBS Bank

Auditor: Kreston Helmi Talib PAC

Lawyer: Morgan Lewis Stamford LLC

Leadership

SCWO is governed by a Board and is headed by a Chief Executive Officer .

The Board members are volunteers who contribute pro-bono their time, expertise and services to SCWO. During the financial year, the Board members did not receive any remuneration from SCWO for their contributions.

The 23rd Executive Board was appointed on 22 June 2024. The 23rd Executive Board held a total of 6 Board meetings in the financial year.

Details of SCWO’s 23rd Executive Board are as follows:

S/N	Name and Current Designation	Date of First Appointment to Board	Date of Latest Appointment to Board	Occupation	Board Attendance
1	Dr Seow Yian San, President	25.06.2022	22.06.2024	Orthodontist, Ko Djeng Dental	6 of 6
2	Ms Junie Foo, Immediate Past President	30.06.2018	22.06.2024	Board Director, Agency For Integrated Care	3 of 6

3	Mdm Noorfarahin Binte Ahmad, 1 st Vice President	25.06.2022	22.06.2024	Lead Mentor, NTUC Women & Family	5 of 6
4	Ms Ong Soh Chin, 3 rd Vice President	25.06.2022	22.06.2024	Communications and Editorial Consultant, Percolate Communications	5 of 6
5	Ms Kelley Wong, Honorary General Secretary	22.06.2024	22.06.2024	Senior Associate, Morgan Lewis Stamford LLC	6 of 6
6	Ms Liyana Sinwan, Assistant Honorary General Secretary	22.06.2024	22.06.2024	Senior Associate, K&L Gates Straits Law LLC	5 of 6
7	Ms Grishma Kewada, Honorary Treasurer	25.06.2022	22.06.2024	CEO/Country Manager, Singapore Branch Office, Coface	5 of 6
8	Ms Bay Teck Cheng, Assistant Honorary Treasurer	25.06.2022	22.06.2024	Director Procurement Strategy, NTUC Fairprice Co-operative Ltd	4 of 6
9	Dr June Goh, Board Member	22.06.2024	22.06.2024	Senior Consultant, Division of Anaesthesiology, Singapore General Hospital	4 of 6
10	Mdm Jeanette Ng, Board Member	29.07.2025	29.07.2025	Director, Wah Meng Enterprise Pte Ltd	3 of 3
11	Ms Paige Parker, Board Member	22.06.2024	22.06.2024	Author	6 of 6
12	Ms Sim Hwee Hoon, Board Member	27.08.2024	27.08.2024	Board Director of Income, Singapore Labour Foundation and Stashaway	6 of 6
13	Ms Mrinalini Venkatachalam, Board Member	22.06.2024	22.06.2024	Regional Director - South East Asia, North Asia and Oceania, WEConnect International	5 of 6

Conflict of Interest

If any Board member has an interest in any contract or proposed contract that SCWO has entered into or is about to enter into, either directly or indirectly, she should declare her interest at the meeting when the contract/ proposed contract is discussed. After that, she must not be present at the discussions during the meeting or vote on the contract.

SCWO has a whistle blow policy to address concerns on any activity that infringes on the organisation's code of conduct or violates the law.

Executive Management Team

1). Ms Koh Yan Ping
Chief Executive Director
Appointed since 3 January 2023

2). Ms Lorraine Lim
Deputy Chief Executive Officer
Appointed since 1 July 2021

Disclosure of Remuneration

During the financial year, 3 of the three highest paid staff received more than \$100,000 but less than \$200,000 each in annual remuneration.

No paid staff serve on the Board of SCWO.

SCWO has no paid staff, who are close members of the family of the Board members, Chief Executive Officer or Deputy Chief Executive Officer, who each receives total remuneration exceeding \$50,000 during the financial year.

Principal Sources of Funding

SCWO is mainly funded by government grants and donations. Other income includes membership fees, thriftshop sales and fees for its various programmes and services.

Funds

SCWO has several funds which are ringfenced by agreements with funding agencies or donor's intent. These ringfenced funds are disclosed in note 21, 22 and 23 of the audited accounts.

The Singapore Women's Hall of Fame ("SWHF") was launched on 14 March 2014 to recognise and honour the outstanding women of Singapore in all fields of endeavour. Through an annual induction ceremony where outstanding women are honoured, the SWHF also shares, through rigorous outreach efforts, these inspiring stories with students and the public to inspire and educate.

SWHF fund is ringfenced by donor's intent. As at the financial year end, SWHF fund has a deficit of \$31.6k as the actual income was lower than expected. Management plans to address the deficit by increasing income including donations and programme fees.

Purpose of Assets held

SCWO's assets comprised leasehold property, furniture and fittings, office equipment, renovations and computers which are used for its operations.

Reserves

SCWO aims to maintain its reserves at a level equivalent to at least 2 times the current annual operating expenditure. SCWO regularly monitors its cashflows and manages its funds to ensure they are adequate to fulfil continuing obligations. SCWO's reserves policy is disclosed in note 31 of its audited accounts.

Fundraising and Expenditure Plans for the Following Year

SCWO will continue to strengthen and diversify its fundraising efforts to support the organisation's long-term sustainability and the continued delivery of programmes and services for women and the community. In addition to the annual Charity Gala Dinner and the In Her Stride campaign, SCWO will continue to explore and expand other fundraising and donor engagement initiatives across the year. These include fundraising and awareness efforts linked to New2U by SCWO and related community donation drives, as well as partnerships, campaigns, and engagement activities aimed at increasing public participation and support for SCWO's mission.

In the coming year, SCWO also plans to expand its research and advocacy efforts, as well as community engagement and outreach activities, to further advance conversations and action around issues impacting women in Singapore. This includes strengthening public education, thought leadership, partnerships, and engagement platforms that support SCWO's mission and advocacy priorities.

Audited Financial Statements

The full set of audited financial statement is available at www.scwo.org.sg.

THE YEAR AHEAD



CONVENE,
COLLABORATE,
CREATE IMPACT

As SCWO marks 45 years of powering change, we remain committed to strengthening our role as a trusted voice, convener, and catalyst for progress for women in Singapore. Guided by our renewed strategic direction, we will continue to build on the momentum of the past year while responding to the evolving needs of women, families, and our member organisations. Through platforms such as the Summit for Action on Gender Equality (SAGE) and strategic engagements across sectors, SCWO will continue bringing together diverse stakeholders to exchange perspectives, address emerging issues, and advance practical solutions that create meaningful impact.



EVIDENCE,
INSIGHTS,
BETTER OUTCOMES

SCWO will also continue to champion an evidence-based approach to advocacy and service development. Building on insights from our Mental Health Survey on middle-aged women, we will further conversations on wellbeing, workplace inclusion, access to support systems, and the challenges women face across different stages of life. At the same time, we will continue reviewing and strengthening our membership framework to ensure it remains sustainable, equitable, and aligned with the collective value created by our member community.



SUPPORT,
EMPOWER,
TRANSFORM LIVES

We remain steadfast in supporting women who require critical services, safety, and care through our programmes and community initiatives, providing pathways to stability, resilience, and empowerment for women and families facing difficult circumstances. As we look ahead, we do so with gratitude for the support of our members, partners, donors, volunteers, and community. Together, we will continue building a future where every woman has the opportunity to thrive with dignity, confidence, and equal opportunity.

23RD EXECUTIVE BOARD



President
Dr Seow Yian San

Association of Women Doctors
(Singapore)



Immediate Past President
Ms Junie Foo

International Women's
Forum



1st Vice President
Mdm Noorfarahin Ahmad

NTUC Women and
Family



3rd Vice President
Ms Ong Soh Chin

Association of Women for
Action and Research



Honorary General Secretary
Ms Kelley Wong

Young Women's
Leadership Connection



Assistant Honorary
General Secretary
Ms Liyana Sinwan

Singapore Muslim Women's Association
(Persatuan Pemudi Islam Singapura)



Honorary Treasurer
Ms Grishma Kewada

Financial Women's Association
(Singapore)



Assistant Honorary
Treasurer
Ms Bay Teck Cheng

Society for WINGS



Board Member
Dr June Goh

SG Her Empowerment



Board Member
Mdm Jeanette Ng

People's Association Women's
Integration Network Council
(PA WIN)



Board Member
Ms Paige Parker

United Women Singapore



Board Member
Ms Sim Hwee Hoon

Young Women's
Christian Association



Board Member
Ms Mrinalini Venkatachalam

Women in Sustainability and
Environment

SUB COMMITTEES

AUDIT

KELLEY WONG
YU SZE MIN

Chairperson
Member

BOARDAGENDER

GRISHMA KEWADA
GEORGETTE TAN
LYNN ER
SHAI GANU
TROY HAN
GIAO PIK HO
SWEENEY LACHMAN
JOY TAN

Chairperson
Co-Chair
Member
Member
Member
Member
Member
Member

COMMUNICATIONS

ONG SOH CHIN
SEOW YIAN SAN
KELLEY WONG

Chairperson
Co-Chair
Member

FINANCE

GRISHMA KEWADA
BAY TECK CHENG
SIM HWEE HOON

Chairperson
Co-Chair
Member

FUNDRAISING

PAIGE PARKER
MRINALINI VENKATACHALAM

Chairperson
Co-Chair

HUMAN RESOURCES

SEOW YIAN SAN
NOORFARAHIN AHMAD
BAY TECK CHENG
JUNIE FOO

Chairperson
Co-Chair
Member
Member

MEMBERSHIP

NOORFARAHIN AHMAD
KELLEY WONG
SEOW YIAN SAN

Chairperson
Co-Chair
Member

MAINTENANCE SUPPORT CENTRAL

JUNE GOH
SIM HWEE HOON
LAURA HWANG CHENG LIN
AHMAD NIZAM ABBAS
FOO SIEW FONG
GLORIA JAMES-CIVETTA
LEE LI HUA
LIM TANGUY
ABDUL RAHMAN BIN MOHD HANIPAH
LIYANA SINWAN
TEO LIN LEE

Chairperson
Co-Chair
Advisor
Member
Member
Member
Member
Member
Member
Member
Member
Member

NEW2U by SCWO

MRINALINI VENKATACHALAM
JEANETTE NG

Chairperson
Co-Chair

RESEARCH & ADVOCACY

SEOW YIAN SAN
NOORFARAHIN AHMAD
ANGELIQUE CHAN
SABRINA SIT

Chairperson
Co-Chair
Member
Member

SAWA

SEOW YIAN SAN
BAY TECK CHENG

Leader
Co-Leader

STAR SHELTER

LIYANA SINWAN	Chairperson
PAIGE PARKER	Co-Chair
CLAIRE CHUANG	Member
HO SHIONG YEE	Member
LEE LI HUA	Member
CHRISTY LIM	Member
BHARATHI MANOGARAN	Member

SINGAPORE WOMEN’S HALL OF FAME (SWHF)

JUNIE FOO	Chairperson
ANGEL CHAN	Member
ANNE LOCHOFF	Member
SOH LAI YEE	Member
KAREN WONG CHAYAVIRABOOD	Member

SWHF SELECTION PANEL

CHAN HENG CHEE	Chairperson
ZURAIDAH ABDULLAH	Member
KEVIN TAN	Member
MILDRED TAN	Member
ARFAT SELVAN	Member

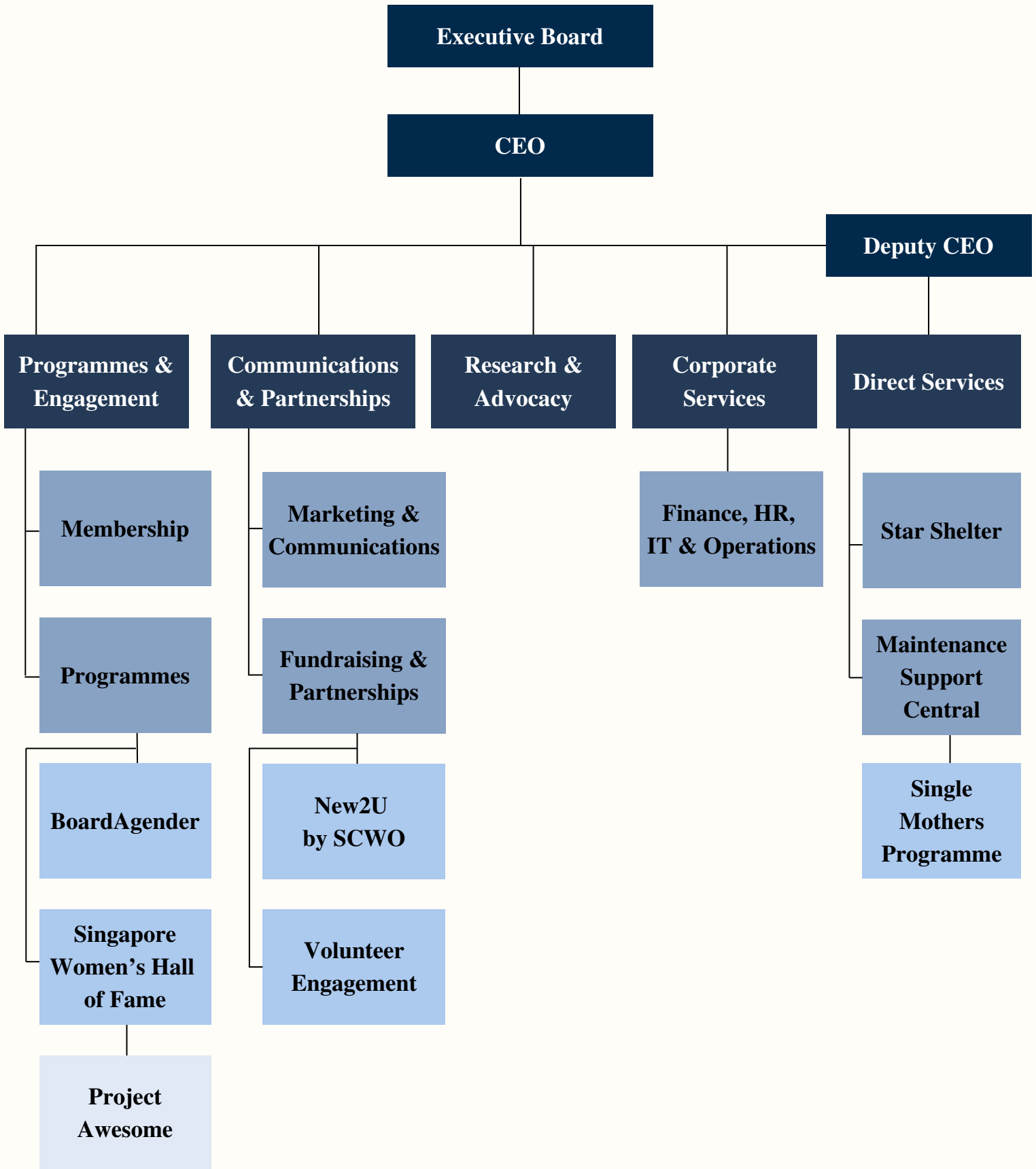
SWHF RESOURCE PANEL

JANET ANG	Member
NICK APLIN	Member
GEH MIN	Member
HOWIE LAU	Member
MELANIE OLIVEIRO	Member
JUNE RUSDON	Member
YONG YING-I	Member

TASKFORCE FOR AGEING

BAY TECK CHENG	Chairperson
JUNE GOH	Co-Chair
RAZWANA BEGUM	Member
JESSIE CHIU	Member
SAMANTHA WONG	Member
SARA MEI WOO	Member

ORGANISATIONAL CHART



DONORS & SUPPORTERS

We are truly grateful to our community for standing with us and the women we serve. Your continued support makes a meaningful difference, and we sincerely thank you for it.

#GivingBack Foundation	Catherine Poyen	Chua Khim Hwee
@bsolute Cleaning Pte Ltd	Cecilia Fung	Chua Khim Thai
AASTRAL Beauty	Chan Ee Wen Adeline	Chua Pit Lee
Accary Blaise Gilles Marie	Chan Kai Le	Chua Rui Xuan
Adam Tan	Chan Kar Yan Dawn	Chua Swee Heng
Adrian Tan Memorial Fund	Chan Kwai Onn	Chua Wee Teck
Alessandro Felicani	Chan Min	Chua Yang
Alex Tanoto Lim	Chan Poh Lin Linda	Clara Szabo
Alexe Wallace	Chan Shu Ling	Claudia Lee Xue Ting
Aline Wong	Chan Siew Yee	Cloop Pte Ltd
Allumallu Anila Deepthi	Chan Siu Hui Ann	Constance Teo
Alvin Tan Chin Aun	Chan Yuen Ping	Crasta Renita Sophia
Amanda He	Chan Zi Hua	CSE Global Limited
Amanda Ling	Chang Cho Yew	D.S. Lee Foundation
Amo Elisa	Chantane Manonom	David and Catherine Zemans Foundation
Amy Sim	Chaow Goon Mun	De Leon Ace Patrick Espiritu
Ananthnarayan Veeravanallur	Charissa Kwek	Debbie Yew Siew Khim
Lakshminarayan	Charmaine Ramesh Daryanani	Debby Giam Shining
Anastasia Amanda Beh Gaik Sim	Cheah Jia Hui Bernice	Deborah Hoe
Andi Sanjaya Tjong	Cheah Zhen Ying	Deborah Loh Choy Lian
Ang Chi Hern	Chee Lee Ching	Denise Phua
Ang Mian	Chee Rui Qi Lisanne	Diana Pang
Ang Pei San & Koh ChengJie	Chee Wei Lin Grace	Diastar Pte Ltd
Ang Shi Min Jennifer	Chelsia Sim Qiu Xia	Disha Goenka
Ang Siok Chen	Chen Chengchi	Dissanayake Shanika
Ang Yen Hua	Chen Lan Heong	Donald Seah Wei Ping
Angeline Lim Cuifang	Chen Minhui	dōTERRA Enterprises Singapore Pte Ltd - Doterra Healing Hands Foundation
Angelique Chan	Chen Yingshi	Douglas Benjamin
Anju Bhardwaj	Cheng Cong	Drashy Umang Trivedi
Ann Sim	Cheng Hui Zhen	Dubb Monica
Anna Binti Ismail	Cheng Lynn	Edmund Neo Chun Wah
Anna H	Cheryl Lau Jin Yi	Edrington Singapore Pte Ltd
Anna Vanessa	Cheryl Lim Khai-Wei	Elynur Nayir
Ann-Margaret Mathew	Cheung Wing Tsung Vincent	Emily Chan Yat Meng
Applewhite James Edward Clive	Chew Chuan Keong	Emily Follett
Arumugam Prakash	Chew Lin	Emmy Binte Abdul Alim
Association of Women Doctors (Singapore)	Chew Pei Yin	Employees of P&G
Atiqah Mashhood Dar	Chew Pheng Pheng	Enckell Elisabeth Maria Therese
Australian High Commission Singapore	Chew Sutat	Esther Chia Hui Yean
AWARE	Chew Tze Xin	Eu Yan Ting
Aye Mya Theingi	Chew Zheng Yi Avery	Eunice Loo Su Mei
Ayesha Raj	Chia Chia	Evi Farida
Bai Yang	Chia Pei San	Evianty
Balista Rochelle Divina Muga	Chia Swee Ye Gavin	Faith Sudharman-Chan
Basapa Celeste Ann Nee Phillips	Chia Szu Tee (Xie Sidi)	Falcone A P
Beh Su En Priscilla	Chiang Si Yu Candice	Farhana Basrai
Belthasar Praisly	Chin Hui Yi	Farhana Binte Mohammed Anuar
Bengawan Solo Pte Ltd	Chiu Sock Yin Linda	Favorex Pte Ltd
Benjamin Tay	Chng Luey Chun	Fazilah Binte Abdul Latiff
Berlinda Gooi Lee Woan	Chok Ping-Wo Milvi	Feng Weiwei
Bird Bradley Stephen	Chong Siak Ching	Ferguson Emily
Bloomberg Singapore Pte Ltd	Chong Swee Fong Pauliana	Flower Diamond Boutique Pte Ltd
Brijesh Pande	Chong Wai Ying Ruby	Fo Shu Yi Cynthia
Buckley John Leo	Chong Yuan Fang	Fong Huey Sian
Cai Yunlong	Choong Lay Peng	Fong Shu Ning
Cai Zonghan	Choong Sin Kheong	Fong Weixiang Alwin
Cao Hoang Bao Tran	Choy Chan Seng	Foo Jinchang June
Carter Adam George	Choy Kim Hong	Foo Kwee Joen Junie
Cashin Olivia Beatrice	Christa Kao Sze Yang	Foo Siew Juan
Cassandra Au	Chua Ah Hee	Foong Yee Moi
	Chua Chooi Ling	
	Chua Hui Hui	

Fortune Times Pte Ltd	Jennifer Lie	Lee Heow Yong
Gan Hui Ying	Jenny Chew	Lee Jia Jia
Gan Siow Huang	Jenny Lim May Ling	Lee Jia Le Jason
Garth Dorothee	Jesscy Chua Tein-Pei	Lee Kin Kwee
Gaurav Sonar	Jessica Cheam	Lee Kong Roo
Gaurav Yashwant Sonar	Jessica Little	Lee K-Zen
Gayathri Selvamany	Jessie Tjioe Hui Yi	Lee Siew Muay Yvonne
Genriver Financial Pte Ltd	Jessilin Khee Shi Lin	Lee Sze Ling
Georgina Lee Sui Ming	Jeyasri Ramamoorthy	Lee Yan Shan
Ginny Wiluan	Jiang Yi	Lee Yew Keong David
Giridharan	Jimmy Chew Kwong Yik	Lee Yuen Leng Ellyn
Gladys Tan Li Yue	Jo Harding	Lee Zhuan
Goh Eng Cher	Joanne Soo Hwei Chieh	Leny Suparman
Goh Hock Guan	Joash Tan Thong Tzer	Leong Sook Lai Justin
Goh Kai Yun	Jonathan Gan Chin Jer	Ler Pei Jin
Goh Pheck Suan June	Jovial Huang Liting	Li Chunan
Goh Siak Shyong	Juliana Binte Mohammad	Li Kaiying
Goh Siew Yin Geraldine	Julie Bataller Kyaw	Li Ling
Goh Sok Kim	Jummaida Binti Rusdon	Li Xinru
Goh Vivien	Jurado Shilpi	Li Yiqing
Gordon Chiam Sin Hui	Kanade Shriram Sudhir	Lian Hin Pte Ltd
Grace Blanchon	Kang Chui Hsia Lyndis	Lian Wan Ying
Grace Lee Pei Yein	Kang Hui Min	Liew Shaw Leong
Grace Young	Kanwaljit Soin	Lih Wei-Song
Gretton Megan E	Karanja Hormuzd Russey	Lilian Yew Siew Mee
Grishma Kewada	Karen L	Lim Eng Eng
Gul Maryanne	Karen Michelle Liew	Lim Hwee Hoon
Gwee Chuan Lin	Karen Soh	Lim I-An Christopher Jr
Hang Le Le	Karen Wong Chayavirabood	Lim Jiarong Sherman
Hari Jaya Singh Kiran Kumar	Karisah M Shah	Lim Jye Wei
Harminder Kaur D/O Darsan Singh	Katrina Alexis Yu	Lim Kah Huat
Hee Xin Wei	Kayyathiri D/O Dinakaran	Lim Kee Thiam
Heng Nguan Leng	Keira Chan Ying Ying	Lim Kim Luang
Heng Yoke Khee	Kelley Wong Kar Ee	Lim Le Ying
Henry Goh Chee Kiong	Kelly Giam Shiyu	Lim Li Yan Clare
Ho Jin Ming Ginny	Keppel Care Foundation Ltd	Lim Lii
Ho Mei Foong Michelle	Keshia Lai Shu-Hui	Lim Ming Yee
Ho Xinni Imelda	Kho Zi Chao (Gao Zichao)	Lim Poh Suan
Ho Yi Ching Lynn	Khoo Beng Hai	Lim Siew Yan
Ho Yi Hui	Khor Huan Ni	Lim Sok Kee
Ho Yi Ling Joanne	Khor Soo Yien	Lim Swee Lian Ivy
Hoh Siow Har	Kimberly Cheng	Lim Teck Chai Danny
Hoon Poh Leng Pauline	Kishan Kumar	Lim Xinyi Felicia
Huang Hanyin	Kng May Choo	Lim Ye-Jie Johnathan
Huang Lijun Tracy	Koh Gek Li	Lim Yi Tung
Huang Yongping Abigail	Koh Li San	Lin Lee Seh
Hung Yi-Hsuan	Koh Quay En	Lin Qiumin Nellie
iGlobe Partners (II) Pte Ltd	Koh Siew Lin Michelle	Lin Zimo
Indranee Thurai Rajah	Koh Xin Li	Lindgren Karin Michaela
Ingenious Beverages Pte Ltd	Kohli Radhika	Loh Hui Yi
Inner Wheel Club Of Singapore	Kok Lai Ching	Loh Ming Hwee
Central	KOSE Singapore Pte Ltd	Loh Pei See
Institute Estetica Pte Ltd	Krishneet Singh	Loh Poey Ling
Irene Wong Ai Lin	Kuhan Ganehsan	Loh Seet Yoong
Iris Sharon Domingo	Kwan Rosa	Loi Hwee Ting
Ivan See	Kwok Fong Chen Agnes	Lok Wan Chee
Ivan Toh Soon Ann	Kyler Hung Ka Nam	Long Caroline May Lynn
Jaime Laura Rosario	Kymerly Ng	Long Siew Fong
James Beeland Rogers Jr	Lai Pei Ling	Loo Lian Bin
James Wong Seow Boon	Lam Wee Fong	Looi Hui Jun
Jane Boey Phui Whye	Lance Lim Teng Hong	Louis Aeshan M De Cabral Wijetunge
Janet Ang Guat Har	Lanfrey Tristan Roger Daniel	Louisa Lau Min Yi
Jauhainen Tuija Marjaana	Laura Hwang	Low Chin Loo
Javern Sim Jun Yan	Law Ting Jun	Low Fong Chan Margaret
Jean New Wei Tzen	Lee Eileen	Low Mei Chin Sherrie
Jeannine Nicole Sim Yi Xuan	Lee Foundation	Low Ong Huat Ernest
Jefferson Tandanu	Lee Gek Ling	Low Pei Yun
Jennifer Lee Gek Choo	Lee Ghim Ha Jill	Low Ping Ping

Low Rin	Ngiam Mei Shean Michelle	Progress ABMS Pte Ltd
Low Soo Fern Adelyn	Nguyen Linda Han	PropertyGuru Pte Ltd
Low Yoke Ling	Nguyen Thanh Tuyen	Prophete G D/Prophete A E
Loy Ern Chi	Nicholas Giles Aplin	Q&M Dental Group (Singapore)
Lu Binger	Nicola Bennett	Limited
Luba Marine Survey Private Limited	Nicole Wee	Quek Chen Yee Eileen
Lucia Ngiam	Nicolina Charlotte Elrick	Quek Soo Boon
Lucy Ooi	Nimbalkar Arrya Ajit	Rahul Mohan Patil
Luo Qin	Nisa d/o Raja Sekaran	Rajpal Simran
Lydia Vadukkoot Chacko	Nithya Levi Vasanthan	Randall Marty Robert Takashi
Lynn Er	Norlindah Binte Mohd Taib	Ratna Juita
M Lee	Novicova Alexandra	Ravichandran Udhayarani
M.Baxendale	NTUC Women and Family Unit	Regina Hong Shu Ying
Ma Cristina Uy Abing-Lim	Nur Qistina Binte Abdul Wahid	Renee Kwek Le Zhen
Ma Ling	Nur Sabrina Binte Latif	Renee Leong
Maini Tara	Nurhidayah Binte Yazid	Richard Payne
Mak Wan Yee	Nurul Murny Binte Jubir	Rikesh Chand Rai
Mandura Ivan	Nuur Diana Binte Suparji	Rint Rosely Delos Santos
Manjula Krishna	Oh Chun Siang	Ritika Cabral
Maralit Maricris Formalejo	Okada Mamiko	Robers Leanne Michelle
Marcello Nusiner	Ommar Thein	Roshini d/o Thangarajan
Margaret Thomas	Ong Ai Hua	Rozana Binte Azmat
Maria Alexandra Fernandez	Ong Chih Ching	Rudyani Binte Supati
Rodriguez	Ong Guan Guan	Ruifeng Wealth Management Pte Ltd
Marina Bay Sands Pte Ltd	Ong Hui Ying	Sabrina Sit
Marshall Wace Singapore Pte Ltd	Ong Hwee Yee	Sae Kim Teerapat
Masmintrachaiyanara Kasamawati	Ong Lee Chin	Samantha Wong Wan Jing
Matthew James Campbell	Ong Soh Chin	Sammi Lam
Maureen Png Yi Wen	Ong Tee Wei Florence	Sankar Samiksha
Maybank Singapore Limited	Ong Tsu Hwee Adeline	Sarah Bong En Shi
Me Me Hlaing	Ong Wan Bee	Sarah Soo Minn
Megan Png	Ong Yeow Chon	Scown Catherine Maria
Megha Tyagi	Ong Yik Tatt	Seah Ai Ching
Mehta Bhavya Hemendra	Ong Yuk Hong	See Tho Ving Yuen
Mehta Chandergupt	Ow Wen Yan	Seow Yian San
Merveille Jerome Louis Andre	Own Seak Chin	Serena Teo Ee Leng
Michael Paul Kane	PA Women's Integration Network	Sham Pui Yin Enrica
Michelle Lee Ying-Ying	Council (PA WIN)	Sharma Richa Punj
Michelle Wong Mei Li	Page Snehal Amol	Sharma Vedika
Mimi Yow	Paige Parker	Shell Singapore Network of Women
Mindful Mama Meets	Pang Chai Yin	Shih Chun-Chi
Ministry of Social and Family	Pang Kah Gek	Shiow Kar Hui
Development	Pang Lim	Shirley Lim
Moomoo Financial Singapore Pte Ltd	Pang Ly-Shan	Shopee Singapore
Mrinalini Venkatachalam	Pang Pei Fang	Shweta Singhal
MUFG Bank Ltd	Panneerselvam Sriraghavendarar	Sia Pei Ling
N A Asika Thahsin	Paris Melody Tan Reis	Sian Chay Medical Institution
Nadar Rajesh	Park Hyun Young	Sim Hui Ying Yvonne
Neo Li Yun Joyce	Parkway Hospitals Singapore Pte Ltd	Sim Hwee Hoon
Neo Shu Li	Pattabhi Rajan	Sim Hwee Hua
Ng Bixuan	Pattabhiraman Venkatram	Sim Mei Lin Joanna
Ng Chean Loong	Paul Howard Simons	Sim Shi Hui
Ng Chee Xin	Pek Poh Cheng	Sim Xinni Shermaine
Ng Choon Hwee Bernard	Pereira Erica Stella	Simangan Jacqueline Magistrado
Ng Ghee Hao	Petkov Tihomir Georgiev	Simonnet Stephanie S C
Ng Guan Jia	Pierce Stephanie Rouk Wei Lim	Sin Jia Hui
Ng Jia Wei	Piret Camille Nelly Morgane	Singapore Muslim Women's
Ng Lay Kheng	Png Guochen Kenny	Association (PPIS)
Ng Pei Qin	Poh Xin Yi	Singapore National Co-operative
Ng Siang Hock Danny	Pok Hong Ling	Federation (SNCF)
Ng Sook Hwa	Polar Instruments (Asia Pacific) Pte	Singapore Pools (Private) Limited
Ng Tiong Say	Ltd	Siok Yen
Ng Wee Teck	Pooja Bhandari	Siti Erinna Binte Riduan
Ng Wee Teng Nichol	Poon Mae Shen Victoria	Siti Sue Lastrie Binte Mohamad
Ng Xin Ning	Prabhat Kumar Rana	Seman
Ng Yu Han	Priscilla Wong Ling Chu	Sng Poh Poh Lotus
Ng Yue Ling	Priyadharshini d/o Krishna	Society For WINGS
Ng Zu Hui	Procter & Gamble International	Soh Hui Shan
	Operations SA Singapore Branch	

Soh Jun Jie
Song Wei
Song Weiyang
Sonia Arumuganainar
Sonya David Alappat
Soon Leong
Soon Yue Jun Austin
Soong Yun Min
Sophia Ang Bee Leng
St. Thomas Orthodox Syrian
Cathedral Singapore
Stenson Wong and Elizabeth Lynn
Koh
Stephanie Halim
Stephen Lok Theng Piu
Students of Dover Court International
School
Students of Singapore Polytechnic and
Aurelie Reverie
Sue Anne Cheong Yoke Yee
Sumathi Packerisamy
Sun Jinyu
Susan Margaret Stewart
Sylvana Ingrid Jusuf Hanafi
Tan Ching Ne
Tan Ee Lynn
Tan Gui Fang Edlyn
Tan Hwee Hua
Tan Hwee Shuang Zoline
Tan Jie Lin Melissa
Tan Jieying Charlene
Tan Kai Ting Adeline
Tan Ke Yun
Tan Kim-Pei
Tan Lai Peng
Tan Lay Kheng
Tan Lu-Lin Louanna
Tan Sharleen
Tan Sin Sing
Tan Sin Yee Cassandra
Tan Sze Yee
Tan Tinh-Ren Mary
Tan Wei Shi Mavis
Tan Whei Mien Joy
Tan Xiu Tong Mildred
Tan Xuan Lin
Tan Yang Sheng Daniel
Tan Yee Herng
Tan Yi Lin
Tan Yong Choon Desmond
Tan Ze Fa
Tan Zhiyi Jeremy
Tang Pak
Tang See Kit
Tang Soo Yee Ellis
Tang Zhengming
Tanishka Gowri Shankar Rao
Tara Fernandez
Tay Hou Ngee Agnes
Tay Le Sann Jamie
Tay Shi Wei Edwin
Tay Siew San
Tay Sook Hiang
Tay Yee Lan
Teo Sze Lin Claire
Teo Zhixin
Teoh Kiah Leng Eileen
Teoh Lyn Synn
The Advocators Co Pte Ltd
The Art Space By Natalie Wong
The Bank Of New York Mellon
Thun Hui Lee
Tiffany Ng
Timothea Slorach
Tina Suryani Bte Samsudin
Toh Hong Yang
Toh Miao Chin
Toh Ying Cherie
Tong Chan Kit
Tong Huey Chin
Tong Yueting
Too Lin Lee
TPB Collective Pte Ltd
Trina Neo
Tseng Seng Kwong Patrick
Valerie Cheah Pek Yee
Valerie Ng Si Xuan
Vanessa Koh Zi Lin
Vasant Kumar Ramamurthy
Vaynii A Satish
Velani Utomo
Venkatachalam Mrinalini
Veronica Liew Wei Ling
Victoria Ng Mei Shu
Vincenzo Iuorno
Vivian P J Chandran
Vivienne Soh
Wang Xinbin
Wang Yinzhao
Wang Yuechen
Way Kai Wei
Wee Chuen Jack
Wee Poh Suan
Wee Siew Lin Karen
Wendy Long Jit Chin
Winnie Tang Yun
Wong Chin Pei Annie
Wong Jia Yun
Wong Kai Ting
Wong Shao Ying
Wong Shu Zhen Priscilla
Wong Si Hui Jacqueline
Wong Sue Anne
Wong Tien Hua
Wong Wing Leung William
Wong Yuk Ting
Wu Jiawei
Wu Jiezhen
Wu Meiyi Amanda
Xue Hua
Yan Ziqi
Yang Shi Lin Sherine
Yang Weiwei
Yang Xueying
Yang Yuan Rong Francly
Yap Ai Ching Cindy
Yap Kim Hee
Yap Su-An Sarah
Yap Wendy
Yap Zhi Jia
Yee Ting Yin Anita
Yeo Chuan Ann Elvin
Yeo Hong Leong
Yeo Jen Yong Bryce
Yeo Mantita
Yeo Puay Khoon
Yip Sui Ki Karina
Yip Yi Yan
Yokesaa Mahesh
Yonah Liew
Yong Ying-I
Young Women's Leadership
Connection (YWLC)
Yu Jia Feng Jocelyn
Yu Xuan
Yuen Kit Kuan
Yvonne Mak Hui-Lin
Zarifah Binte Mohamed Bashir
Zarinah Binte Mohamed Zin
Zhuo Jia Yi



SCWO

Singapore Council of Women's Organisations

**EQUAL SPACE,
VOICE AND
WORTH.**



Follow, like and share:



@TheSCWO



www.scwo.org.sg